

Taking Assessments – Student Version

The Assessment Tool in Vista allows students to take quizzes, surveys and self-tests. As a student, you may see your grade immediately after submission or at a time specified by your instructor. Assessments can be found on the homepage, in an organizer page, on the toolbar, or as a link inside a learning module.

Before taking a quiz, disable pop-up blockers on your browser since quizzes in Vista open in a new pop-up window. In addition to pop-up blockers, make sure that you have the latest version of the Sun Java Virtual Machine.

There are several steps that you need to go through when taking a quiz.

Step 1: Click the **assessment icon** within the course to open a quiz.

Sally's Handout Section



[Assessment 1](#)

Step 2: After clicking the quiz icon, you will see the page as shown in the following figure. Read the initial instructions. The instructions will tell you how long you have to take the assessment, how many times you have to take it, how much it is worth, and how the question(s) will be presented to you. You can click **Instructions and Troubleshooting** for additional information. When you are ready to begin your assessment, click **Begin Assessment**.

Assessment 1

 [Description](#)

Available starting: May 31, 2006 10:00 AM

Available until: May 31, 2006 12:00 PM

Duration: 1 Hour(s)

Note: your completion time is measured from when you click **Begin**
Once the allotted time has expired, you will not be able to save any mc

Question delivery: All at once

Note: questions can be answered in any order. You can revisit que

Attempts allowed: 1

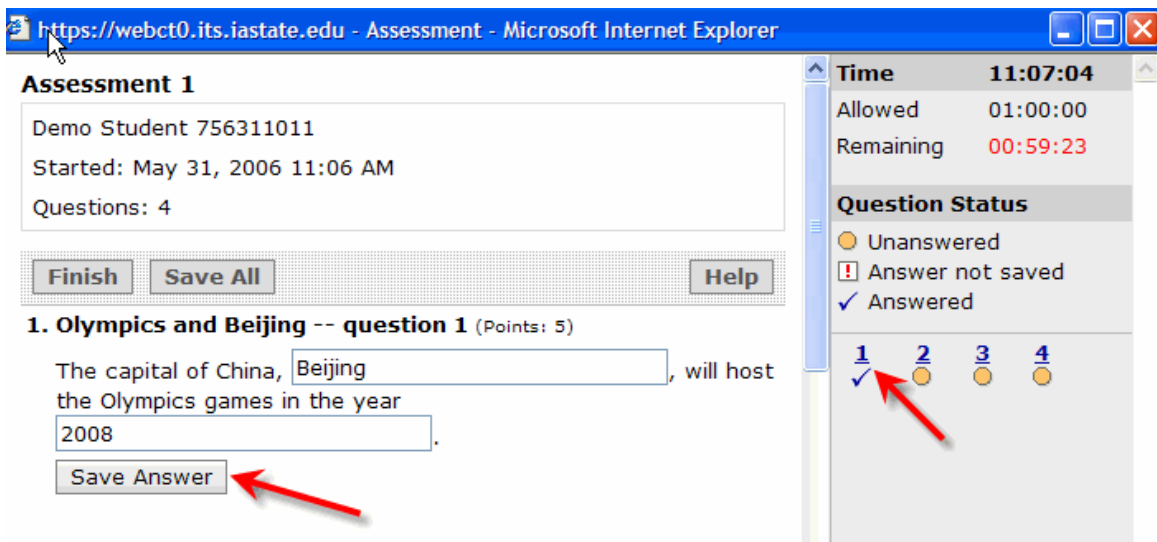
Attempts completed: 0

Grade: -/20

[Begin Assessment](#)

[Instructions and Troubleshooting](#)

Step 3: The assessment will appear. Read and answer each question. After you choose an answer, click **Save Answer**. If you change an answer, click **Save Answer** again. Under Question Status, Vista will show you which questions have been answered by replacing yellow circles with blue checkmarks.



https://webct0.its.iastate.edu - Assessment - Microsoft Internet Explorer

Assessment 1

Demo Student 756311011
Started: May 31, 2006 11:06 AM
Questions: 4

[Finish](#) [Save All](#) [Help](#)

1. Olympics and Beijing -- question 1 (Points: 5)

The capital of China, , will host the Olympics games in the year .

[Save Answer](#)

Time 11:07:04

Allowed 01:00:00
Remaining 00:59:23

Question Status

- Unanswered
- Answer not saved
- Answered

1 2 3 4

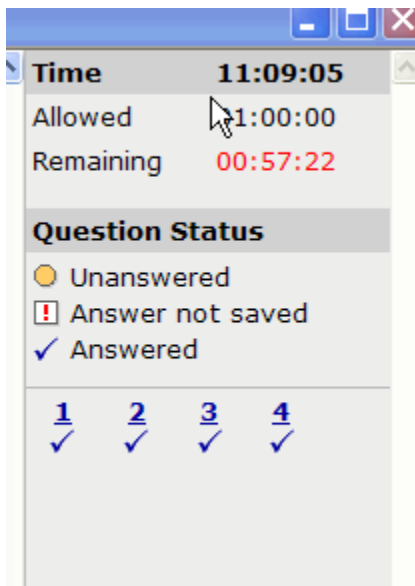
✓ ○ ○ ○

Make sure you save your answer each time to progress to the next question(s). If the answer has not yet been saved, you will see the message

"Answer not saved" for the question under Question Status even if you have answered the question. Click **Save Answer**. A blue checkmark will then replace the red exclamation point and indicate that your answer has been saved under Question Status.

The screenshot displays an assessment interface. On the left, a 'Matching pairs' section contains five rows, each with a city name and a dropdown menu showing a country: Moscow (Russia), Beijing (China), Rome (Italy), London (England), and Tokyo (Japan). Below this is a 'Save Answer' button with a red arrow pointing to it. On the right, a sidebar shows the current time as 14:37:12, with an allowed time of 01:00:00 and a remaining time of 00:55:25. The 'Question Status' section lists 'Unanswered' (yellow circle), 'Answer not saved' (red exclamation point), and 'Answered' (blue checkmark). Below this, four question indicators are shown: 1 (blue checkmark), 2 (blue checkmark), 3 (yellow circle), and 4 (red exclamation point) with a red arrow pointing to it.

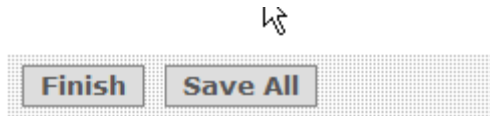
Note: Answer each question. Periodically check the Time and Question Status areas on the right-hand side of the screen as you proceed through the assessment. Make sure you submit the assessment within the predefined time limit. In the following example, students have 10 minutes to take the assessment and approximately 57 seconds remaining before having to submit the assessment.



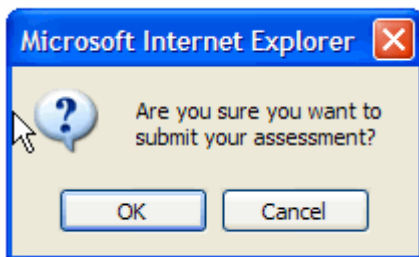
If your instructor has set up the assessment for you receive one question at a time and you are allowed to revisit previous questions, there are a couple things to be aware of:

1. It is important not to use the Back button in your browser window. This may cause you to lose your answers and prematurely submit your assessment.
2. If you want to return to a previous question, use the question status area on the right-hand side of the screen, as shown in the previous example. You can select the question you want to go back to, review or change your answer (make sure you click **Save Answer**), and then use the same status area to go back later questions.

Step 4: Make sure you have saved all your answers. When you are ready to turn in your assessment, click **Finish** to submit your assessment.



Step 5: Click **OK** to submit at the confirmation prompt.



Step 6: You will see the screen as shown in the following figure. Click either **OK** to exit the assessment or **View Attempt** to see your grade on the assessment. Your instructor must release this information to you. Therefore, if you are not able to view assessment feedback or your grade, ask your instructor when the grading information will be released to you.

Assessment 1: Submitted

✔ You have successfully submitted your Quiz.

Please check your grade after you submit the quiz



Step 7. Click **View Submission** to check your score. You can also view the Status (i.e., *Graded/Not Graded*) and the time you spent taking the assessment.


Assessment 1

Grade **15.00/20** The grade displayed is the First of your attempts.

Attempt	Status	Score	Time
<u>Attempt 1</u>	Graded	15.00	<u>00:04:22</u>

Step 8: Click **Attempt 1** under the Attempt column and view details about your assessment. The information on this page may or may not be available to students depending on the settings controlled by your instructor. After reviewing your assessment results and feedback, you can click **Done** to exist the assessment. After completing the assessment, you can browse to any area within the course through the internal navigation of Vista.

1. Olympics and Beijing -- question 1

 The capital of China, 1.-----, will host the Olympics games in the year 2.-----.

Student Response	Value	Correct Answer
1. Beijing	50%	Equals Beijing (50%)
2. 2008	50%	Equals 2008 (50%)

General You can find the answer in the Chapter 2, page 25.

Feedback:

Score: 5/5

Comments: